

**Model number and suffix code**

Model	Suffix code	Specification
XL101		8ch, with Push-in type terminal block unit
XL102		16ch, with Push-in type terminal block unit
XL104		16ch, with M3 screws type terminal block unit
	-D	Power cord(UL/CSA Standard)
	-F	Power cord(VDE Standard)
	-H	Power cord(GB Standard)
	-R	Power cord(SAA Standard)
	-S	Power cord(BS Standard)

**Optional accessories and Spares**

	Name	Model No.	Description
Optional accessories	Type-K TC	90060	5 meter × 4 sets
	Carrying case	93037	To store the main unit and accessories
	Lithium ion battery	94009	2,400 mAh, 7.4 V
	Stand	93039	Supports tilted installation on the desktop, wall mounting, and DIN rail mounting
	Digital I/O cable	91029	For pulse/logic inputs and alarm outputs, 3 m
	Communication cable	91011	RS-232 communication cable for PC (9 pin)
	Printer cable	91010	RS-232 cable for printer
	Printer	97010	Includes 1 roll thermal paper and 1 battery pack
	Printer thermal paper	97080	10 rolls/set
	AC adapter for printer	94006	Power supply 200-240 V
AC adapter for printer	94007	Power supply 100-120 V	
Spares	Terminal block unit (16ch)	95052	8ch, Push-in type
	Terminal block unit (8ch)	95053	16ch, Push-in type
	M3 screws terminal block unit (16ch)	95055	16ch, M3 screws type
	Rubber boot	93036	Impact protection
	AC adapter (Suffix code)	94010	Power cord
		-D	For UL/CSA Standard
		-F	For VDE Standard
		-H	For GB Standard
	-R	For SAA Standard	
	-S	For BS Standard	

**Accessories**

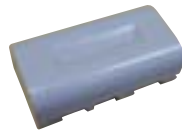
Printer (97010)



Carrying Case (93037)



Lithium ion battery (94009)



Digital I/O cable (91029)



Stand (93039)



\* The AC adapter for printer (97010) is available as an option.

**Related products (Connectable to Datum-Y)**

Clamp on power meter CW120 series

RS-485 ModBus



Digital illumination meter 510 series

analog 0 to 1V



Clamp tester CL series

analog 0 to 1V



Y