

- **ONE YEAR LIMITED WARRANTY**

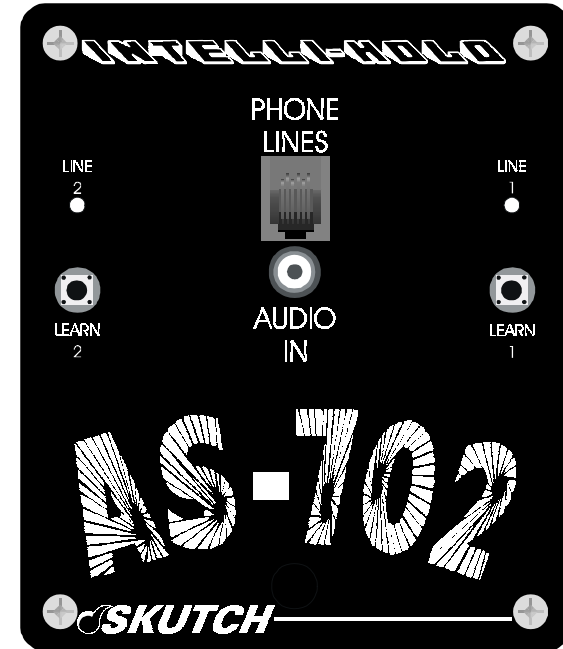
This SKUTCH PRODUCT is warranted against defects for a period of one (1) year from the date of the original invoice. Within this period, we will repair it without charge for parts and labor. To obtain warranty service the product must be returned, at the customer's expense, to SKUTCH Electronics along with a copy of the original invoice. After the unit has been repaired, SKUTCH will ship the PRODUCT back via UPS GROUND service at our expense. If any other form of return shipment is requested, the customer will pay for 100% of the shipping cost.

This Warranty does not apply if in the sole opinion of SKUTCH Electronics, the PRODUCT has been damaged by lightning or any other Acts of God, or by accident, misuse, neglect, or improper packing, shipping, modification or servicing by other than an authorized SKUTCH Service Center.

EXCEPT AS SPECIFICALLY PROVIDED IN THIS AGREEMENT, THERE ARE NO OTHER WARRANTIES, EXPRESSED OR IMPLIED, INCLUDING, BUT NOT LIMITED TO, ANY IMPLIED WARRANTIES OR MERCHANTABILITY OR FITNESS FOR A PARTICULAR PURPOSE AND IN NO EVENT SHALL SKUTCH ELECTRONICS BE LIABLE FOR LOSS OF PROFITS OR BENEFITS, INDIRECT, SPECIAL, CONSEQUENTIAL OR OTHER SIMILAR DAMAGES ARISING OUT OF ANY BREACH OF THIS WARRANTY OR OTHERWISE.



"Telecommunication Products to solve Telecommunication Problems"

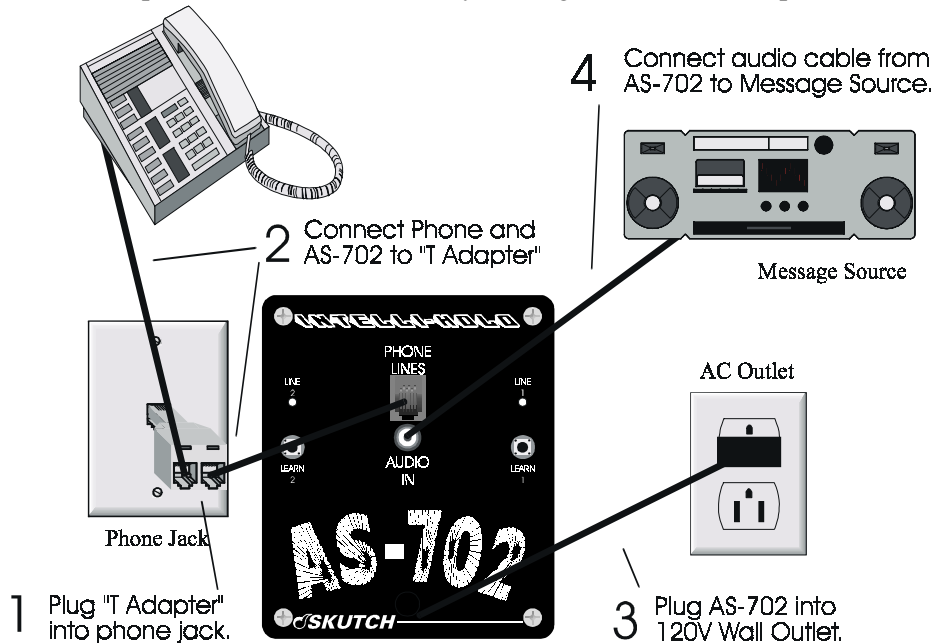


AS-702 "Hold Key" Two-Line Promotion- On-Hold Adapter

Version 8.8

• Installation

Thank you for purchasing the AS-702 Music On-Hold Adapter. Follow the four steps below for connection to your single or two-line telephones.



• Operation

Once the everything is connected you MUST learn your phones before the unit will work right. Once programmed, the unit will automatically play your message when a call is placed ON HOLD. Be sure you set your Message Source to a good listening level.

You MUST Program The Unit

- 1) Call someone from LINE 1 on a phone (the AS-702 LINE 1 light will turn red).

- 2) Press the LEARN 1 button on the AS-702 (see right) for 1 second, then release (the AS-702 LINE 1 light will blink red and green).
- 3) Press the HOLD button on the telephone (the AS-702 LINE 1 light will blink green for 5 seconds then turn solid green).
- 4) Hang up LINE 1 and call someone from LINE 2 on a phone (the AS-702 LINE 2 light will turn red).
- 5) Press the LEARN 2 button on the AS-702 (see left) for 1 second, then release (the AS-702 LINE 2 light will blink red and green).
- 6) Press the HOLD button on the telephone (the AS-702 LINE 2 light will blink green for 5 seconds then turn solid green).
- 7) Hang up LINE 2.
- 8) REPEAT these steps for each phone; DON'T move the phones to the unit, or the unit to each phone.

• Troubleshooting Guide

• No Audio But The Light Turns Green On The AS-702

- Make sure the Message Source is playing.
- Make sure the Message Source volume is turned up.
- Make sure that the audio cable is connected from the headphone jack on the Message Source, to the AUDIO IN jack on the AS-702.
- Make sure the audio cable has the right plug for the AS-702 (male phono or RCA).
- Make sure you are NOT using a "Dubbing" audio cord.

• Light stays red on the AS-702 after pressing hold

- Make SURE you did the PROGRAMMING steps (see left).

• Light flashes red on the AS-702 all the time

- This means that the line light (Line 1 or Line 2), that is flashing, is not connected to the AS-702; check your phone line connections (possibly a bad phone cord).