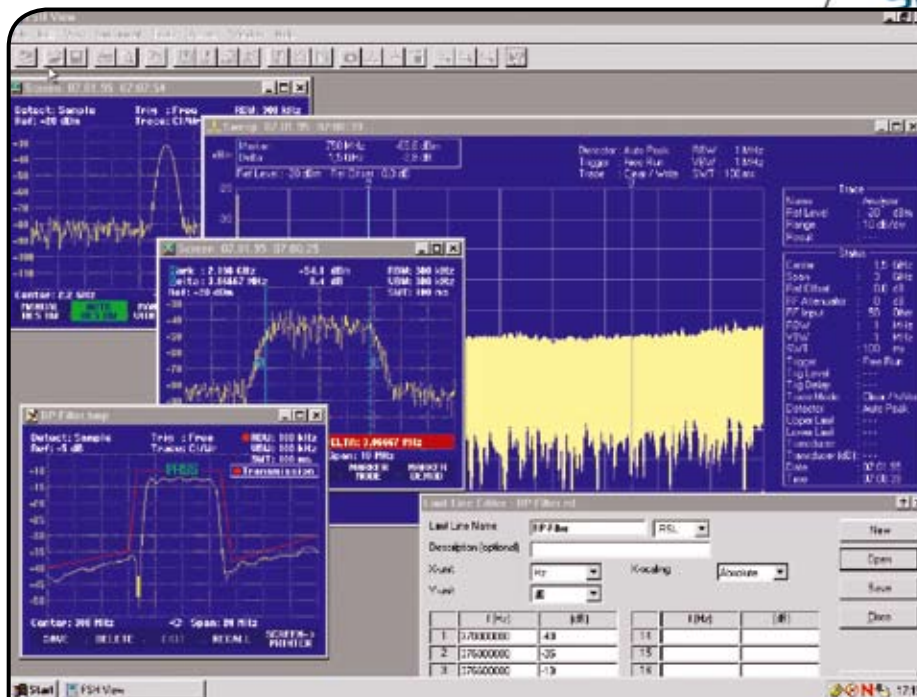


R&S® FSH View Control Software

The powerful software package for documenting your measurements is supplied with every R&S® FSH.



Features

- Runs under Windows 98/ME/NT/2000/XP
- Rapid and simple transfer of measurement data from the R&S® FSH to a PC and vice versa
- Data export in ASCII or MS Excel format
- Printout of all relevant data via Windows (screenshot of the R&S® FSH display for documentation)
- Graphics data stored in standard formats (.bmp, .pcx, .png, .wmf)
- Permanent and continuous transfer of sweeps to the PC; facilities for subsequent analysis (markers, zoom, etc)
- Storage space for traces and measurement data, as well as for comparisons of current and previous measurements (available space is limited only by the size of the hard disk of the controlling PC)
- Automatic storage of measurement results at selectable intervals
- Generation of cable data with a built-in cable editor; downloading to the R&S® FSH for distance-to-fault measurements (R&S® FSH-B1)
- Editor for generating limit lines, user-definable standards (measurement of occupied bandwidth, channel power, and TDMA power), transducer factors, and correction factors for taking into account external attenuators or amplifiers, as well as channel lists
- Macro function for Word for fast and easy documentation of measurement results
- Connection between PC and R&S® FSH via interference-free, RS-232-C optical interface