

- 300W Maximum Power
- Operates in Constant current, Constant resistance or Constant power modes
- 1mA current setting resolution
- Voltage, Current and Power are displayed on the back lit display
- Back light LCD
- Values may be enter from key board or rotary dial
- RS232 interface and control software
- Small size and light weight



L300

## SPECIFICATIONS

### Inputs:

1

### Input Volts:

0 to 360V

### Input Current:

0 to 30A

### Input Power:

0 to 300W

### Operating Modes:

Constant current, Constant Resistance or Constant power

### Voltage Resolutions:

0.000V to 3.999V  $\pm(0.2\% + 3mV)$

4.00V to 35.999V  $\pm(0.2\% + 30mV)$

36.0V to 360.0V  $\pm(0.2\% + 30mV)$

### Current Resolutions:

0.000A to 2.999A  $\pm(0.2\% + 3mA)$

3.00A to 35.999 A  $\pm(0.2\% + 3mA)$

### Current Setting Resolution:

1mA (0 to 2.999A), 10mA (3.00A to 30A)

### Power Setting Resolution:

0.1W (0 to 300W)

### Resistance Setting Resolution:

0.01 $\Omega$  (0 to 99.99 $\Omega$ ), 0.1 $\Omega$  (100 to 500 $\Omega$ )

### Minimum Resistance:

< 0.08 $\Omega$

### Ripple:

< 10mV P-P

### Protection:

Over Voltage, Over Current, Over power, Over Heating and Reverse polarity

### Power:

120/220V, 50/60Hz

### Communication:

RS232 or RS485

### Memory:

10 setups may be stored and recalled

### Software:

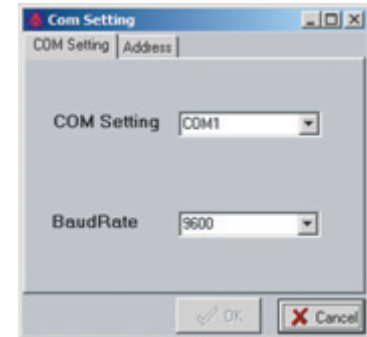
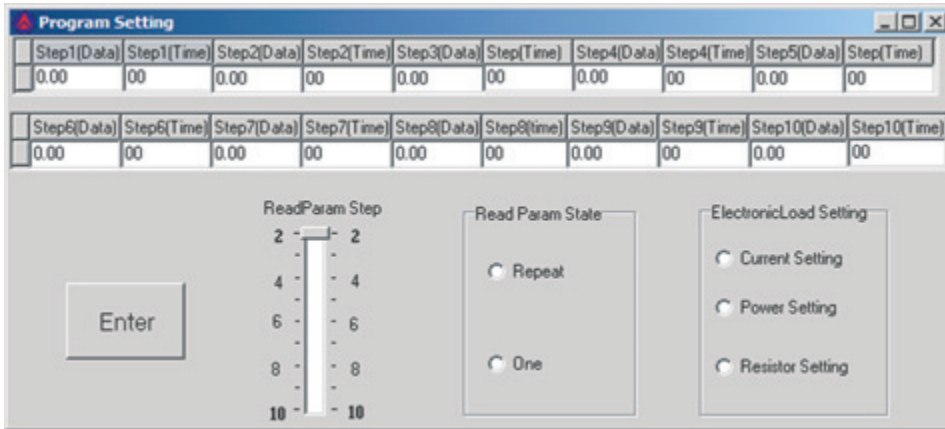
Monitor software CD. ActiveX modules for VC++, Visual basic, Delphi and LabView upon request.

### General Specifications

Size: 3.5" H x 8.3" W x 9.8" D

Weight: 11 lbs

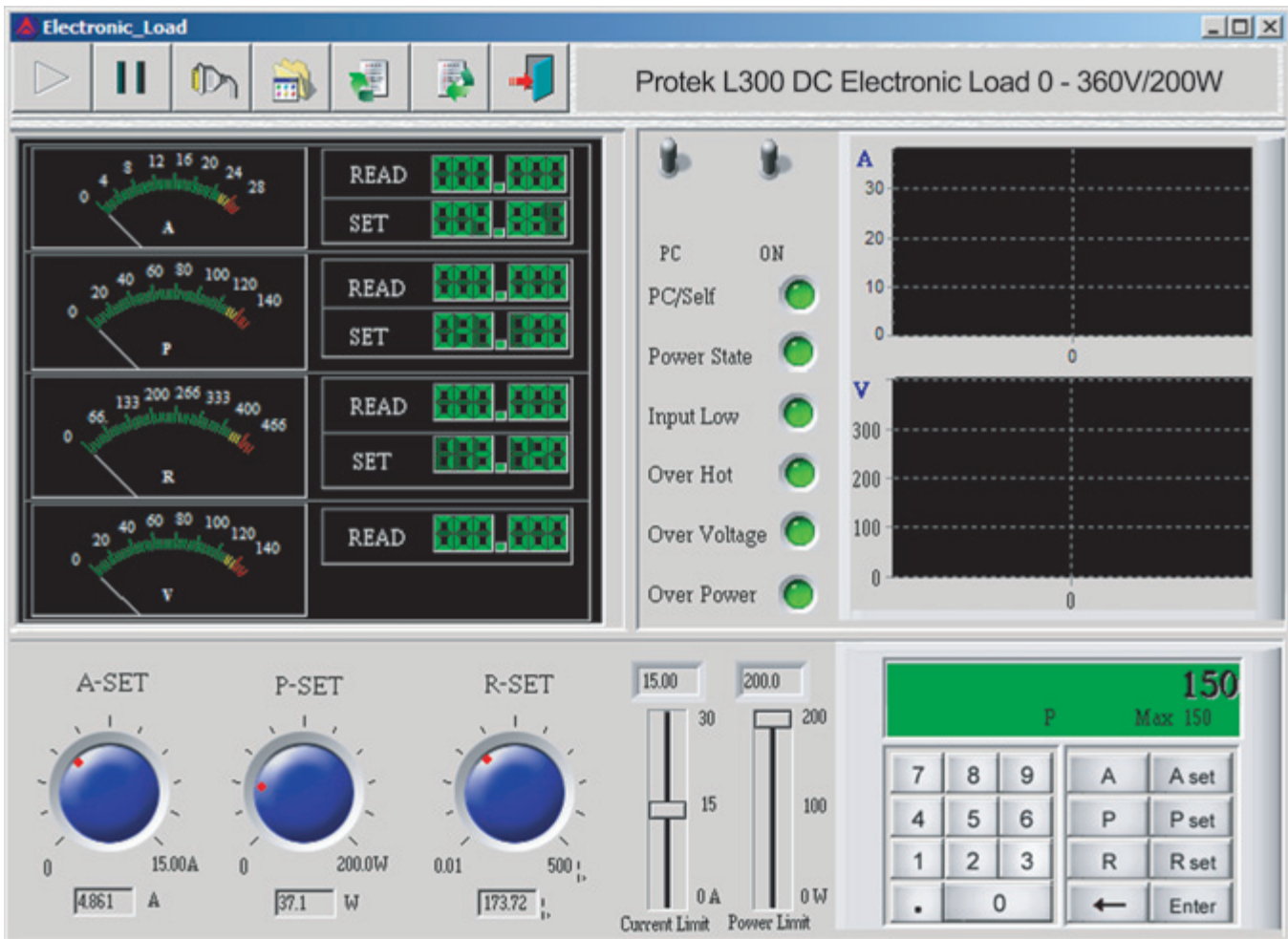
Supplied Accessories: RS232 cable, Control software, RS232 adapter, Manual, AC line cord, Rack mounting brackets and hardware.



Configuration screen: Allows the user to set various parameters for the program.

Communication Setting: Used to configure communication related settings.

## Software



Main screen: Displays feedback from the hardware and allows the user to control various parameters directly from the computer software.