

FOTRIC

226_B

223_B



99 Washington Street
Melrose, MA 02176
Phone 781-665-1400
Toll Free 1-800-517-8431

Visit us at www.TestEquipmentDepot.com

Group Temperature Screening

For high traffic

AGILE | ACCURATE | RELIABLE

Advanced A.I. Facial Detection Monitoring system



AGILE



Group Screening

- Built-in AI facial detection module can screen entire groups of people simultaneously.
- Automatically detects and locks frame and dynamic temperature tag onto face. Even with elements such as masks and glasses.



Multi-target

20+

People



Mask & Glasses

Non-stop Walking

- Face-Tracking allows accurate detection on-the-go.
- Smooth screening with normal flow of people at high-traffic facilities.



Rush Hour

30

Frames per second



Plug and Play

- Professional thermography that needs no training.
- Friendly installation and operation.

15min

Set-up



Plug

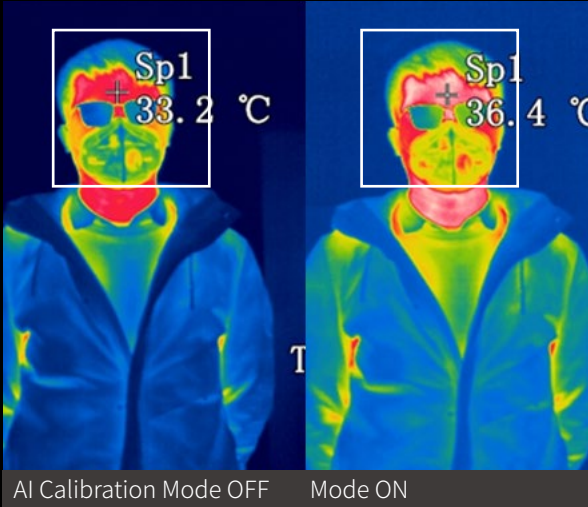


Adjust



Complete

Accurate



Self-Calibration

- Automatically collects body temperatures in different scenarios for self-learning.
- Adjusts the compensation temperature in real time by to refine ambient-biased readings.
- Self-calibration ensures **24/7** stable accuracy without Blackbody.



Self-Learning

24/7

Accuracy

Millimetrical Precision

- AI dynamic Face detection will report the hottest spot on the facial surface, wherever it is.
- Its High-resolution thermal sensor scans simultaneously thousands of spots on the face with millimetrical precision (sensitivity NETD).



High resolution

$\pm 0.5^{\circ}\text{C}$

Accuracy

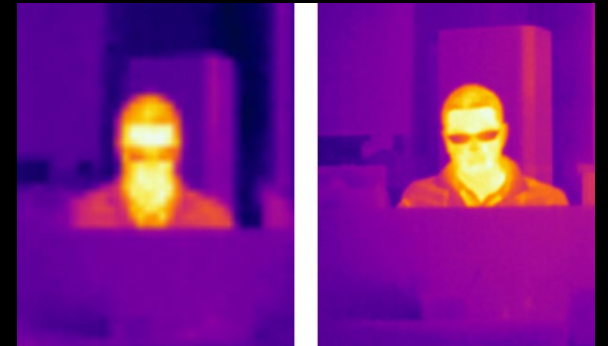


False Alarm-proof

- Intelligently blocks non-facial high temperature sources that would mistakenly trigger the alarm.



Hot mug



Reliable



Multiple Alarm

- Green face frames turn Red when high body temperature is detected.
- Voice or Ring alarm.
- Automatic snapshot of people with abnormal temperature.



Normal



High Temp



Alarm



Snapshot



Smart Archive

- Separate snapshots archive for normal and abnormal readings.
- Multiple shooting modes for enhanced disk space management.
- File naming with detailed measurement information for easy tracking.



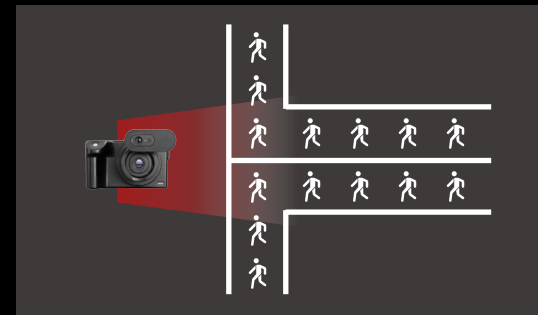
Date



Time



Temp



Social Distancing

- Contactless long-distance screening.
- Broad effective measuring area keeps both users and screening staff safe.



2.5—10.5 ft



4—6 ft

Scenes



Hospital



School



Office



Public Transportation



Business Center



Tourism

Specification

Model	Fotric 226B	Fotric 223B
IR Resolution	384x288 pixels	160x120 pixels
Thermal Sensitivity(NETD)	<0.05°C@30°C	
Field of View(FOV)	28°Hx21°V	
Detector Type	Polysilicon-FPA,uncooled microbolometer,17μm,Spectral Range 8-14μm	
Frame Rate	30Hz	
Temperature Range	20°C-60°C(68°F-140°F)	
Temperature Stability	±0.5°C(±0.2°C with blackbody)	
AI Face Detection	Dual Light Detection(visible light and infrared thermal)	
AI Body Temperature Algorithm	Real time compensation temperature calibration	
Statistic Function	Automatic statistics of test number	
Shooting Mode	Automatic abnormal temperature snap shot or manual shooting	
Alarm Function	Dual color alarm and sound alarm	
Color Pallet	Black-White/Iron/Rainbow	
Image Format	Standard JPEG with temperature data	
Interface Connection	USB	
Software	WLIR Face AI Infrared Thermal Software	
Operating Temperature	0°C-40°C(32°F-104°F)	
Storage Temperature	-20°C-50°C(-4°F-122°F)	
Enclosure Rating	IP40	
Charging System	DC 12V Charger	
Weight	±560g	
Dimensions(LxHxW)	97mmx145mmx93.5mm	
Tripod Mounting	UNC 1/4"-20	
Warranty	1 year	
Battery Life	10 hours	

Certification





Equipment described herein may require EU, US and UNSC authorization for export purposes.

Imagery for illustration purposes only.

Specifications are subject to change without notice.

FOTRIC INC. All Rights reserved.



99 Washington Street
Melrose, MA 02176
Phone 781-665-1400
Toll Free 1-800-517-8431

 Visit us at www.TestEquipmentDepot.com

Innovation
Excellence
Integrity