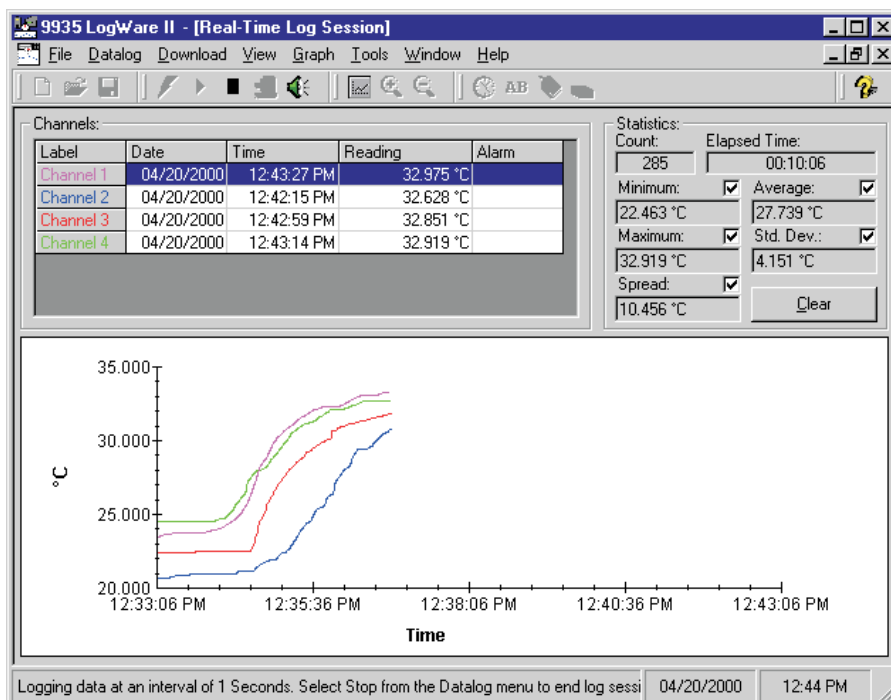


# LogWare and LogWare II



- Turns any Hart thermometer readout into a real-time datalogger
- Calculates statistics and displays customized graphs
- User-selectable alarms, delayed start times, and sample intervals
- Two versions for single-channel or multi-channel thermometer readouts

Turn any Hart thermometer readout into a real-time datalogger with one of Hart's LogWare software packages. Whether you use our 9934 LogWare with a single-channel thermometer readout or 9935 LogWare II with one of Hart's multi-channel readouts, you'll agree that this is the

easiest data acquisition program you've ever used.

LogWare lets you acquire data to your PC graphically and store it to a text file. It also performs statistical functions automatically on each data set.

LogWare was designed specifically for temperature data acquisition. Set high and low alarm conditions, program a delayed start time, store a data log for a fixed number of readings or length of time, program the acquisition interval from 1 second to 24 hours, and let the software record the data you need the way you need it.

During a log session you can view the data in a time/temperature trend graph while the data points are stored to a file on your PC. Output the graph to your printer, view the test points from a spreadsheet, or review the pertinent log statistics once your log is completed. With LogWare II you can collect and view data from up to 96 probes.

With Hart's 1522 Little Lord Logger and 1529 Chub-E4 thermometer readouts, there's even more you can do. Both readouts store thousands of data points in

multiple log sessions. LogWare lets you download your data into individual log sessions and view each one separately.

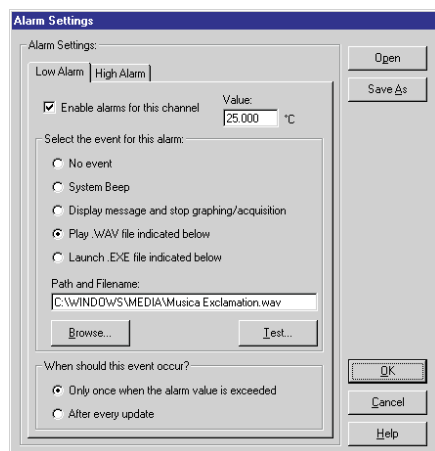
Store readings from your freezers, ovens, chambers, and anywhere else you need to record temperature, bring it back to your PC (through a standard serial cable or infrared dongle), and LogWare will separate each log session into individual data sets. You don't have to load the text file into your spreadsheet and try to figure out which data points went with which log session. LogWare does all that for you.

LogWare also gives you the ability to make configuration changes to your thermometer readout. Program your probe coefficients, write calibration data to your meter, set password-protected parameters, and access other tools specific to your thermometer readout all from your PC.

Get the most out of your readout with LogWare. If you don't agree this is the best temperature acquisition system for your application, send it back and we'll refund your money. Buy it today and try it out at no risk.

## Ordering Information

- |               |  |
|---------------|--|
| <b>9934-S</b> | LogWare, Single Channel, Single User   |
| <b>9934-M</b> | LogWare, Single Channel, Multi User    |
| <b>9935-S</b> | LogWare II, Multi Channel, Single User |
| <b>9935-M</b> | LogWare II, Multi Channel, Multi User  |
| <b>2383</b>   | USB to RS-232 Adapter                  |



Alarm settings screen.