



Voltage Detector

Model No. 40130

CAUTION: Read, understand and follow Safety Rules and Operating Instructions in this manual before using this product.

Safety Symbols



Caution ! Refer to the explanation in this Manual



Double Insulation or Reinforced insulation

Operating Instructions

WARNING: Risk of Electrocution. Before use, always test the Voltage Detector on a known live circuit to verify proper operation

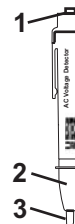
WARNING: Risk of Electrocution. Keep hands and fingers on the body of the probe and away from the probe tip

AC VOLTAGE DETECTION

1. Press the audible tone switch (1) to select tone on or off (IN = ON; OUT = OFF)
2. Touch the probe tip (3) to the hot conductor or insert into the hot side of the electrical outlet.
3. If AC voltage is present, the detector light will flash (2) and the audible warning will sound (if enabled).

NOTE: The conductors in electrical cord sets are often twisted. For best results, rub the probe tip along a length of the cord to assure placing the tip in close proximity to the live conductor.

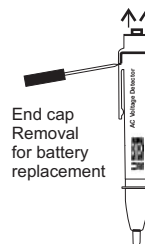
NOTE: The detector is designed with high sensitivity. Static electricity or other sources of energy may randomly trip the sensor. This is normal operation



Battery Installation

1. Open the battery door (end cap) by gently prying up/out at the pocket clip using a small screwdriver.
2. Insert two AAA batteries (observe polarity).
3. Replace the battery door

NOTE: If your meter does not work properly, check the battery to make sure that it still good and that it is properly inserted.



Specifications

Voltage Sensitivity	100 to 300V AC	Bandwidth	50/60Hz
Detection distance	<0.2"	Over voltage	Category III 600V
Operating Temperature	32 to 122°F (0 to 50°C)	Storage Temperature	-4 to 140°F (-20 to 60°C)
Altitude	Operating below 2000 meters	Relative Humidity	80% up to 31°C, decreasing to 50% at 40°C
Battery	2 AAA batteries	Dimensions/Weight	6x0.75x1" / 2oz
Safety	For indoor use and in accordance with Overvoltage Category III, Pollution Degree 2.		
UL Listed	The UL mark does not indicate that this product has been evaluated for the accuracy of its readings.		



99 Washington Street
 Melrose, MA 02176
 Phone 781-665-1400
 Toll Free 1-800-517-8431

[Visit us at www.TestEquipmentDepot.com](http://www.TestEquipmentDepot.com)

[Back to the Extech 40130 Product Info Page](#)

Test Equipment Depot - 800.517.8431 - 99 Washington Street Melrose, MA 02176
 FAX 781.665.0780 - TestEquipmentDepot.com