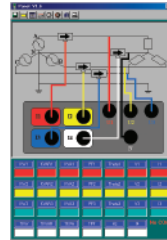


## 1000A 3-Phase Power Analyzer/Datalogger

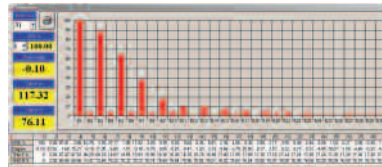
Four clamps for power measurements on single phase, 3-phase/3-wire or 3-phase/4-wire systems

### Features:

- Large backlighting LCD displays 10 parameters simultaneously (kW, kVAR, kVA, PF plus the voltage and current of the three phases)
- Clamp-on True RMS power measurements with software for Harmonics analysis
- Displays Active Power (kW), Apparent Power (kVA), Reactive Power (kVAR) and Power Factor
- Current measurements to 1000A and Voltage measurements to 600V
- kWh, kVARh and kVAh energy measurements
- Automatically logs up to 20,000 sets of measurements and manually logs up to 99 sets
- Programmable Start/Stop datalogging times
- PC interface with Windows® 95/98/NT/2000/ME/XP compatible software for single and three phase voltage/current Waveform display and Harmonic analysis
- Phase sequence measurements
- Complete with 4 current clamps, 4 voltage leads with alligator clips, 8 AA batteries, software, PC interface cable, and carrying case



Software included to download, store data and display on a PC



Software Harmonics Analysis



Includes 4 current clamps and 4 voltage leads with alligator clips



### Applications:

- AC Power evaluation
- Harmonics analysis
- Motor/Generator installation
- Energy audits

CE CAT III-1000V

Function	Range	Basic Accuracy
ACV (True rms):	999.9V	±(0.5%rdg+10d)
ACA:	1000A	±(1%rdg+15d)
Active Power (kW):	999.9kW	±(1.5%rdg+20d)
Apparent Power (kVA):	999.9kVA	±(1.5%rdg+20d)
Reactive Power (kVAR):	999.9kVAR	±(1.5%rdg+20d)
Power Factor:	-1.000 to +1.000	±(3%rdg+30d)
Frequency:	60Hz to 100Hz	±(0.5%rdg+1d)
Phase:	+90.0° ~ 0° ~ -90.0°	±3°
Active Power Energy (kWh):	0.0kWh to 119.3MWh	±(1.5%rdg+20d)
Apparent Power Energy (kVAh):	0.0kVAh to 119.3MVAh	±(1.5%rdg+20d)
Reactive Power Energy (kVARh):	0.0kVARh to 119.3MVARh	±(1.5%rdg+20d)
Harmonics:	1 to 31 (with the software)	±(1.5%rdg+20d)
Datalogging:	20,000 reading	
Dimensions:	9.25 x 4.5 x 2.1" (235 x 116 x 54mm)	
Weight:	Meter: 25.8oz (730g); Clamp: 11.8oz (333g)	

### Ordering Information:

**382090** ....1000A 3-Phase Power Analyzer/Datalogger (60Hz).....**\$1999**  
**382091** ....1000A 3-Phase Power Analyzer/Datalogger (50Hz).....**\$1999**



Test Equipment Depot - 800.517.8431 - 99 Washington Street Melrose, MA 02176

FAX 781.665.0780 - [TestEquipmentDepot.com](http://TestEquipmentDepot.com)