

Heavy Duty Phase Indicator/DMM

Test Equipment Depot
1-800-517-8431

99 Washington Street
Melrose, MA 02176
Phone 781-665-1400
Toll Free 1-800-517-8431

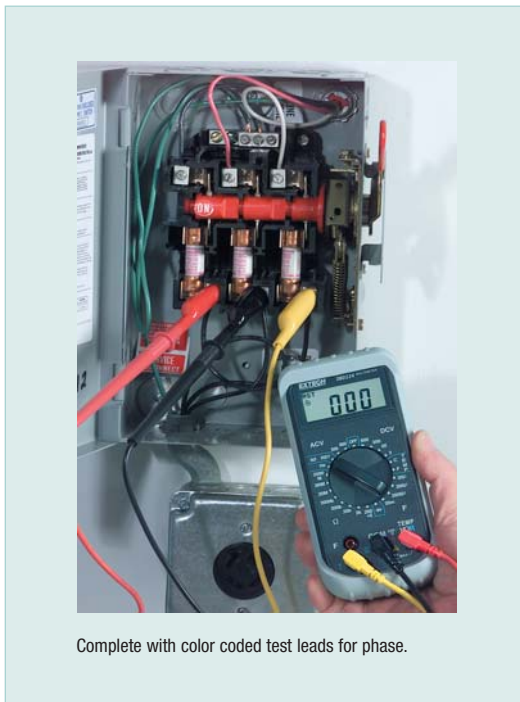
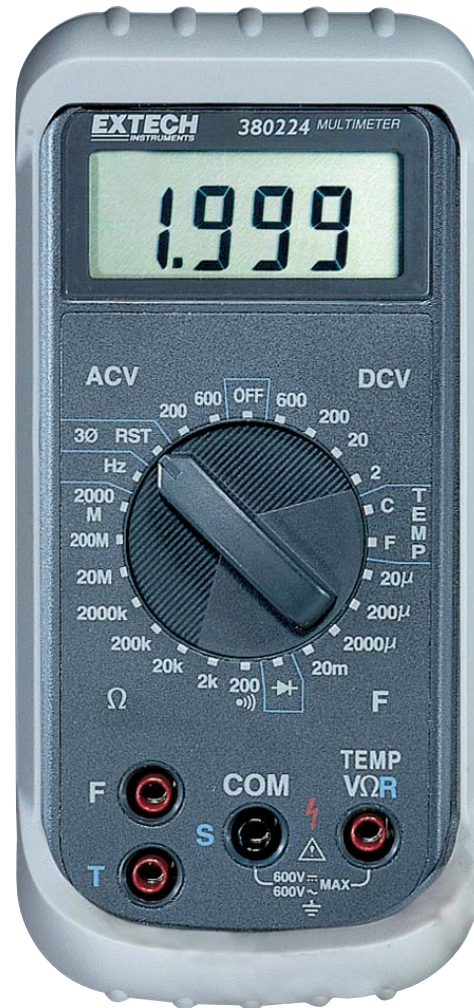
▶ Visit us at www.TestEquipmentDepot.com

▶ Back to the Extech 380224 Series Info Page

✓ **3-phase sequence indicator**
Plus advanced DMM functions including frequency, Capacitance, and Temperature

Features:

- Large 3-1/2 digit display
- DCV, ACV, Capacitance, Frequency, °C/°F Temperature and Phase
- Direction of arrow on display identifies correct or incorrect wiring configuration
- Continuity beeper, Diode tests
- Type K temperature measurements to 752°F (400°C)
- Built-in stand for benchtop use
- Designed for latest US and European safety standards
- Complete with protective holster, color coded test leads for phase, alligator clips, multimeter test leads, bead wire temperature probe (-58 to 482°F/-50 to 250°C), and 9V battery



Complete with color coded test leads for phase.

Specifications:	Range	Accuracy (%rdg+digits)
DC Voltage	2V, 20V, 200V, 600V	±(1.2% +1d)
AC Voltage	200V, 600V	±(2.9% +4d)
Capacitance	20μ, 200μF, 2000μF, 20mF	±(4% +10d)
Resistance (Ω)	200, 2K, 20K, 200K, 2000K, 20M, 200M, 2000M	±1%
Frequency	10Hz to 100KHz (autoranging)	±0.5%
Temperature	-4 to 752°F (-20 to 400°C)	±2%
Phase Indicator	45 to 450Hz, 80 to 480VAC	
Dimensions	5.7 x 2.7 x 1.5" (145 x 69 x 38mm) with holster	
Weight	12oz (340g)	

