

DPI 620 Series

Advanced Modular Calibration and HART[®] Communication System



System Features

- Modular concept provides greater flexibility
- Re-range during use
- Expand over time
- Adapt by application
- Allows significant inventory reduction
- Simplifies user training
- Reduces cost of ownership
- A complete HART communicator and multifunction calibrator in one device

Multifunction Calibrator and HART Communicator

- Accuracy from 0.0025%rdg + 0.002%FS
- Measure, source and simulate mA, mV, V, ohms, frequency, RTDs and thermocouples
- HART digital communicator—complete device library for all HART devices
- Free-of-charge upgrades and new device descriptions
- Easy-to-use with video quality touch screen
- Hand-held PC version with Windows CE
- USB and WiFi IEEE 802.11g connectivity



Pressure Measurement Modules

- 25 mbar to 1000 bar/10 inH₂O to 15000 psi
- Accuracy from 0.005%FS
- Fully interchangeable modules with no need for set-up, calibration or tools

Pressure Generation Stations

- Advanced pressure generation
 - 95% vacuum to 20 bar (300 psi) pneumatic
 - 95% vacuum to 100 bar (1500 psi) pneumatic
 - 0 to 1000 bar (0 to 15,000 psi) hydraulic
- Stand-alone pressure stations can replace hand pumps and can be used as comparators

Applications

- Instrumentation installation, commissioning, maintenance and calibration
- HART test, configuration and calibration
- System measurement and monitoring
- Indicator, recorder and controller testing
- Process loop set up and diagnostics
- Switch, trip and safety system testing

For...

- Plant and process engineers
- Service companies and site contractors
- Installation and commissioning engineers
- Laboratory technicians



Modularity Brings a Whole New Perspective to Multi-Function Test Instruments, Calibrators and HART Communicators

The DPI 620 Series Advanced Modular Calibration and HART Communication System uses three basic components to provide the multi-functionality to perform duties formerly requiring a wide range of different instruments.

- Its basic component is an ultra-compact, electrical, frequency and temperature calibrator and HART communicator, which provides simultaneous measurement and source capabilities with full-featured HART digital interface.
- Pressure measurement is provided by interchangeable pressure modules that can be attached to the calibrator by a pressure module carrier.
- If pressure generation is required, the calibrator and pressure module can be attached to one of three pressure generation stations to form a fully-integrated pressure calibrator of unparalleled performance.

The DPI 620 - a Compact and Powerful Electrical Calibrator

The DPI 620 electrical calibrator can measure and source mA, mV, V, Ohms, frequency and a variety of RTDs and T/Cs. It provides an isolated 24V loop power supply to energize devices and control loops. A stabilized DC voltage supply is available for ratio metric transducers.

High Performance HART Communicator

The DPI 620 multifunction calibrator now incorporates a fully featured HART® communicator that surpasses market-leading communicators in functionality, ease of use and upgrade support. With the DPI 620, a single hand-held device can now configure the full

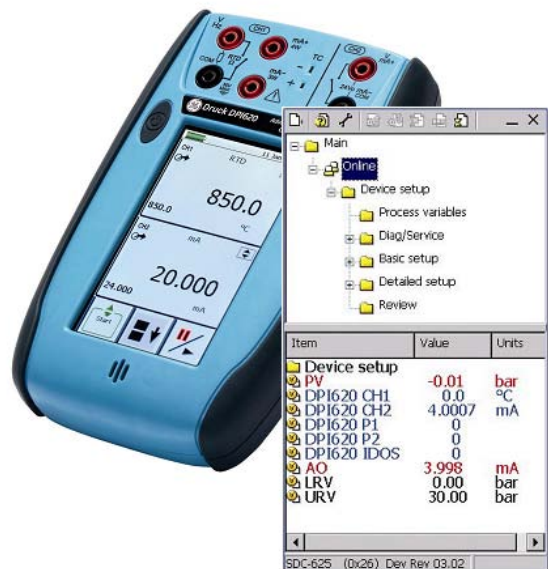
range of HART devices and perform mA trims and sensor calibrations without the need for secondary equipment such as ammeters, calibrators, power supplies and loop resistors. This can significantly reduce equipment inventory, cost of ownership and greatly simplify maintenance activities. The DPI 620 contains the latest application software and a complete library of registered HART device descriptions. Upgrades can be simply downloaded free of charge from our website.

The DPI 620 CE

The Windows CE-driven version of the electrical calibrator provides all the computing power of a conventional hand-held PC or PDA. This means that operators can consult user manuals, training and safety material, datasheets, and installation drawings while in the field or in the plant.

The DPI 620 CE WiFi

The DPI 620 CE version can be further enhanced with wireless IEEE 802.11g communications. For the first time, in a calibrator of this type, it is possible to link to Internet and remote networks in order to access information and to transfer data. This powerful feature will benefit service technicians who spend extended periods away from the office and for those who need instant access to data, safety information, system drawings, and product datasheets while on the move. It will also provide an interface to future system modules when a physical connection is difficult.



Pressure Modules

The pressure modules can be used in conjunction with the relevant pneumatic or hydraulic pressure station and the DPI 620 multifunction calibrator to form an integrated pressure calibrator for test and calibration of pressure instruments including transmitters, transducers, switches, gauges, indicators and recorders

Pressure Stations

There are three pressure generation bases: the PV 621, a pneumatic pressure generator for pressures up to 20 bar (300 psi); the PV 622, a pneumatic pressure generator for pressures up to 100 bar (1500 psi); and the PV 623, a hydraulic pressure generator for pressures up to 1000 bar (15000 psi).

DPI 620 Series Accessories

- Intecal Calibration Software
- 300 V AC measurement probe
- Soft carry case
- Hard transit case
- Spare rechargeable battery
- External battery charging station
- Main power adaptor
- USB cable
- USB to RS 232 converter
- USB to IDOS converter
- Overpressure protection valves
- Pneumatic hose kits
- Hydraulic hose kits
- Pressure adaptor sets
- Comparator adaptor



920-449D