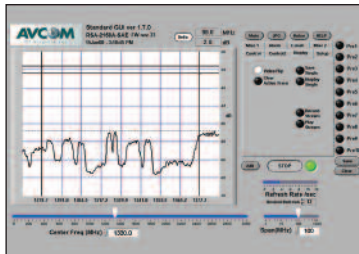


Compact Remote Spectrum Analyzer Off-Site Satellite Communications



User Friendly and Intuitive Remote Graphical Interface For Remote Control and Display of your RSA-2150A-SAE Analyzer

- ✓ Small Compact Size fits into Laptop Bag
- ✓ Rack Mount Capable
- ✓ Fit (2) SAE Units in a 1RU Frame
- ✓ Wall Mount Optional
- ✓ Remote Monitoring from Anywhere in the World
- ✓ Customized GUI's for Specific Applications
- ✓ Data Logging Capabilities
- ✓ User Friendly and Intuitive GUI

RSA-2150A-SAE

Technical Specifications

Frequency Coverage:	950 - 2150 MHz
Span Width:	0 to 500 MHz
Resolution Bandwidth:	100 kHz or 3MHz
RF Sensitivity:	Greater than -85 dBm Typical
Reference Level:	Selectable - 10 dBm to - 50 dBm in 10 dB steps
Scale:	5dB/Div
Dynamic Range:	40 dB On Application Window
Amplitude Accuracy:	± 2 dB Typical
Input Connector:	BNC 50 ohm ("F" adapter included)
Size:	8" W x 1.75" H x 12" D
Power Requirements:	85 - 265 VAC 50/60 Hz
Display:	Avcom Custom GUI based on National Instruments Labview Platform.

Note: Specifications are based on Avcom control system and graphical user interface and may vary depending on the control system used. Please contact Avcom for specifications based on the selected platform.

Specifications subject to change.

©2008 Avcom of Virginia, Inc.
RSA-2150A-SAE RevA

Remote Monitoring

The RSA-2150A-SAE was specifically designed for applications where space is a consideration. With rack space being so valuable, the SAE model will allow the customer to mount (2) SAE units side by side in a single 1RU rack frame. The SAE model can also be wall mounted outside of the rack, or can be carried easily inside a laptop bag and brought directly on an airplane. The RSA-2150A-SAE is Avcom's most versatile spectrum analyzer to date. The RSA-2150A-SAE is the perfect tool for off-site monitoring of your RF carrier from anywhere in the world over the Internet or Satellite.

Versatile Graphical User Interface

The new Avcom Graphical User interface (GUI) is based on the National Instruments Labview Platform and has been customized for several of our customer's applications. Whether your application is Satellite Teleport, Satellite News Gathering (SNG), or remote monitoring for the oil and energy industry, we have a GUI that has been designed to fit your specific need. If we do not have what you need, please ask us and we can probably design a GUI that will fit your needs exactly!

Optional Configurations & Accessories

RMT-SAE	1RU Rack Mount for (2) SAE Units
WMK-SAE	Wall Mount Kit