



A25

Process Gauges

New!

Model 656 Open Front Stainless Steel Pressure Gauges

DESCRIPTION

The 656 Series are suitable for corrosive environments in chemical, petro-chemical, refining, power, marine, and food and pharmaceutical processing applications. Liquid filled pressure gauges provide users with a number of advantages in certain measurement applications. They are ideally suited for uses on equipment where excessive vibration and pulsation are encountered, such as pumps, compressors, machine tools, etc. The liquid fill minimizes the effect of these severe environments, protects the gauge internals, and provides continuous lubrication on the mechanism, all adding up to extended service life. Liquid filling also provides greater protection of the gauge internals from corrosive atmospheres.

AMETEK liquid filled gauges can be used with a variety of fill fluids including glycerin, mineral oil, and silicone oil. These gauges are available in 63 and 100 mm sizes. Consult your local distributor or U.S. Gauge for availability.



SPECIFICATIONS

ACCURACY

Model 6562 (63 mm): +1.6% of full scale (Grade B)
Model 6566 (100 mm): +1.0% of full scale (Grade 1A)

PRESSURE RANGE

63 mm: 30 inch Hg to 0 psi through 0 to 10,000 psi (0 to 6000 psi on the LBM model)
100 mm: 30 inch Hg to 0 psi through 0 to 23,000 psi

Please refer to Pressure Range Table on page A26 for specific information

WORKING PRESSURE

Steady: 50% of full scale
Over Range Protection: 125% of full scale

WORKING TEMPERATURE

Ambient: -40°F to 140°F (-40°C to 60°C)
Fluid: -4°F to 176°F (-20°C to 80°C)

FILLING LIQUID: Glycerin, silicone, mineral oil

PRESSURE CONNECTION: 316L stainless steel

BOURDON TUBE: 316L stainless steel

Model 6562 (63 mm):

Less than or equal to 800 psi: C type Bourdon tube

Greater than or equal to 1000 psi: Helical type Bourdon tube

Model 6566 (100 mm):

Less than or equal to 1000 psi: C type Bourdon tube

Greater than or equal to 1500 psi: Helical type Bourdon tube

CASE PRESSURE RELIEF

Top: Rubber disc for 63 mm

Back: Rubber disc for 100 mm

CASE AND BEZEL RING: 304 stainless steel; bayonet type

MOVEMENT: 304 stainless steel

WINDOW

63 mm: Polycarbonate (laminated shatter-resistant glass window optional)

100 mm: Laminated shatter-resistant glass window

DIAL: White aluminum with black lettering

POINTER: Aluminum alloy, black painted; contact U.S. Gauge for adjustable pointer on 100 mm

PROCESS CONNECTION: See ordering information page A28

SOLFRUNT 656 Series Liquid Fillable Pressure Gauges

WARNING:

Fill fluids can combine with strong oxidizing agents, including (but not limited to) chlorine, nitric acid, and hydrogen peroxide and result in an explosion which can cause property damage and personal injury. If gauges are to be used in such service, consult factory for other alternatives.

In order to correctly use these gauges, it is recommended that users of pressure gauges become familiar with American National Standard ASME B40.100-1998 entitled "Pressure Gauges and Gauge Attachments." This specification is available from the American Society of Mechanical Engineers, United Engineering Center, 345 East 47th Street, New York, NY 10017



Process Gauges

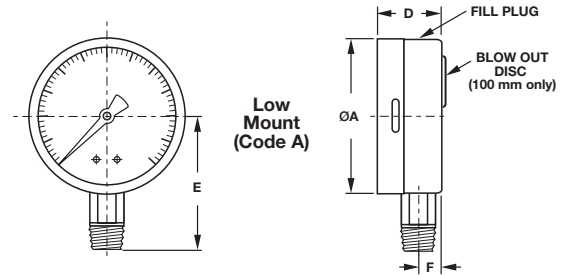
Model 656 Open Front Stainless Steel Pressure Gauges

PRESSURE RANGES

| RANGE CODE | See Page A30 | psi** |
|------------|--------------|-----------------|
| 01 | | 30 in. Hg-0 |
| 30 | | 30 in. Hg-0-15 |
| 31 | | 30 in. Hg-0-30 |
| 32 | | 30 in. Hg-0-60 |
| 33 | | 30 in. Hg-0-100 |
| 34 | | 30 in. Hg-0-150 |
| 07 | | 0-15 |
| 37 | | 0-30 |
| 10 | | 0-60 |
| 38 | | 0-100 |
| 39 | | 0-160 |
| 40 | | 0-200 |
| 41 | | 0-300 |
| 42 | | 0-400 |
| 15 | | 0-600 |
| 43 | | 0-800 |
| 44 | | 0-1000 |
| 17 | | 0-1500 |
| 45 | | 0-2000 |
| 46 | | 0-3000 |
| 49 | | 0-6000 |
| 50 | | 0-10,000 |
| 22 | | 0-14,500 |
| 23* | | 0-23,000 |

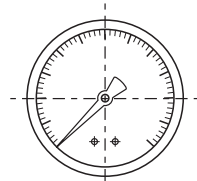
* Not available in 63 mm

**Metric and dual scale dials are available. Please call Customer Service at (863) 534-1504 for more information.

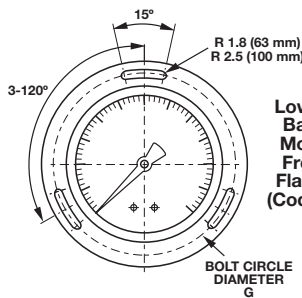
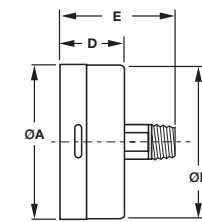


Low Mount (Code A)

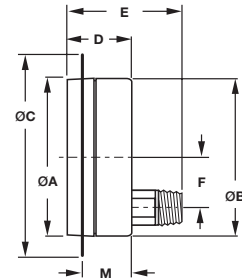
INCHES (MM)



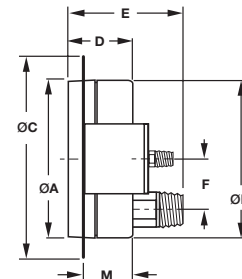
Center-Back Mount (Code F) 63 mm Only



Lower-Back Mount Front Flange (Code N)



Lower-Back Mount U-Clamp Front Flange (Code T) 63 mm Only



63 and 100 mm Pressure Gauges

| DIAL SIZE | MOUNTING CODE | UNIT | A | B | C | D | E | F | G | M |
|-----------|---------------|--------|-------|-------|-------|------|------|------|-------|------|
| 63 mm | A | inches | 2.51 | - | - | 1.30 | 2.15 | .44 | - | - |
| | A | mm | 63.7 | - | - | 33.0 | 55.7 | 11.0 | - | - |
| 63 mm | F | inches | 2.51 | 2.44 | - | 1.30 | 2.24 | - | - | - |
| | F | mm | 63.7 | 62.0 | - | 33.0 | 57.0 | - | - | - |
| 63 mm | N | inches | 2.51 | 2.61 | 3.39 | 1.30 | 2.24 | .51 | 2.95 | 1.10 |
| | N | mm | 63.7 | 66.2 | 86.0 | 33.0 | 57.0 | 13.0 | 75.0 | 28.0 |
| 63 mm | T | inches | 2.54 | 2.64 | 2.99 | 1.30 | 2.24 | .51 | - | 1.10 |
| | T | mm | 64.4 | 67.0 | 76.0 | 33.0 | 57.0 | 13.0 | - | 28.0 |
| 100 mm | A | inches | 3.99 | - | - | 1.97 | 3.27 | .63 | - | - |
| | A | mm | 101.3 | - | - | 50.0 | 83.0 | 16.0 | - | - |
| 100 mm | N | inches | 3.99 | 4.06 | 5.16 | 1.97 | 3.27 | 1.14 | 4.57 | 1.77 |
| | N | mm | 101.3 | 103.1 | 131.0 | 50.0 | 83.0 | 29.0 | 116.0 | 45.0 |



Process Gauges

Model 656 Open Front Stainless Steel Pressure Gauges

SPEC NUMBER SELECTION CHART

| Model 656 (63 mm) | | STEM MOUNTING 1/4-18 NPT | | |
|-------------------|----------------------|--------------------------|------------------------|----------|
| Model Number | 6562 Low Mount | | 6562 Center-Back Mount | |
| Bourdon Tube | 316L Stainless Steel | | 316L Stainless Steel | |
| Connection | 316L Stainless Steel | | 316L Stainless Steel | |
| Range* | Spec No. | Part No. | Spec No. | Part No. |
| 0-30" Hg VAC | 256000 | - | 256024 | - |
| 30"-0-15 psi | 256001 | - | 256025 | - |
| 30"-0-30 psi | 256002 | - | 256026 | - |
| 30"-0-60 psi | 256003 | - | 256027 | - |
| 30"-0-100 psi | 256004 | - | 256028 | - |
| 30"-0-150 psi | 256005 | - | 256029 | - |
| 0-15 psi | 256007 | - | 256031 | - |
| 0-30 psi | 256008 | - | 256032 | - |
| 0-60 psi | 256009 | - | 256033 | - |
| 0-100 psi | 256010 | - | 256034 | - |
| 0-160 psi | 256011 | - | 256035 | - |
| 0-200 psi | 256012 | - | 256036 | - |
| 0-300 psi | 256013 | - | 256037 | - |
| 0-400 psi | 256014 | - | 256038 | - |
| 0-600 psi | 256015 | - | 256039 | - |
| 0-1000 psi | 256016 | - | 256040 | - |
| 0-1500 psi | 256017 | - | 256041 | - |
| 0-2000 psi | 256018 | - | 256042 | - |
| 0-3000 psi | 256019 | - | 256043 | - |
| 0-4000 psi | 256020 | - | 256044 | - |
| 0-5000 psi | 256021 | - | 256045 | - |
| 0-6000 psi | 256022 | - | 256046 | - |
| 0-10,000 psi | 256023 | - | 256047 | - |

* Metric and dual scale dials are available. Please call Customer Service at (863) 534-1504 for more information.