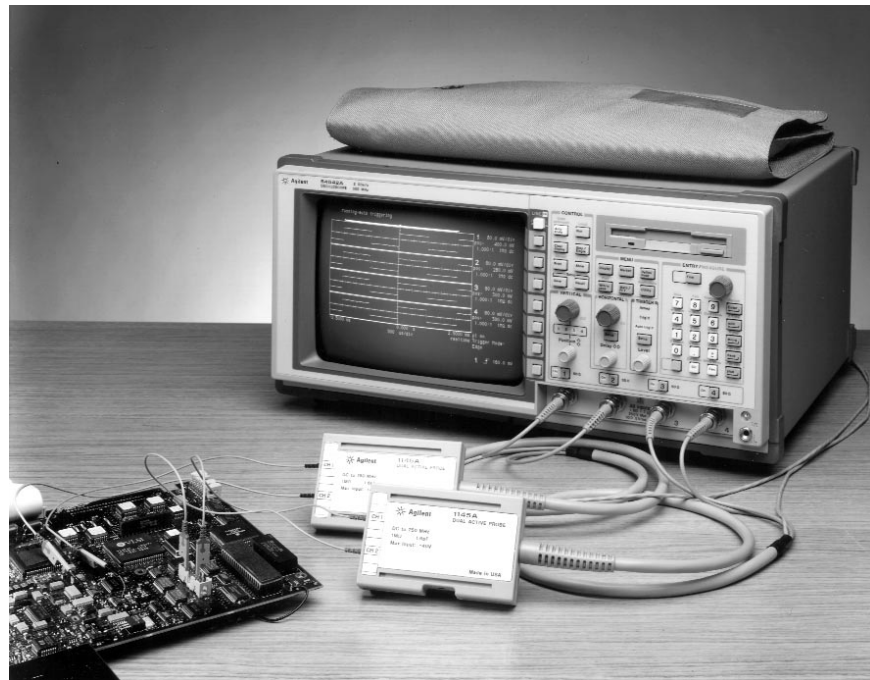
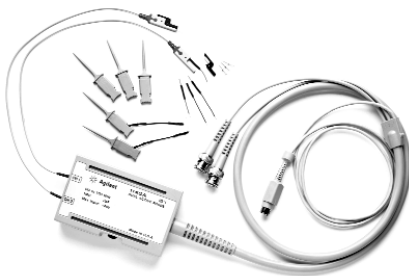


Agilent 1145A

Two-Channel, 750-MHz, Small-Geometry Active Probe for Surface-Mount Devices

Data Sheet



SMD Package and Other Support

- Signal-ground pairs with 100-mil spacing
- 50-mil SOIC and QUAD packages
- 25-mil square pin socket on basic tip mates with most industry standard IC package adapters
- 25-mil JEDEC, 0.5-mm EIAJ, 0.65-mm EIAJ packages

Instrument Compatibility

- Powered directly by Agilent Technologies 54520A, 54522A, 54540A, and 54542A oscilloscopes.
- Use the Agilent 1142A external power supply with any other instrument with 50 Ω inputs.

Features

- 2 channels per assembly
- dc to 750-MHz probe bandwidth
- 1-M Ω input resistance
- 1.6-pF input capacitance
- 10X attenuation



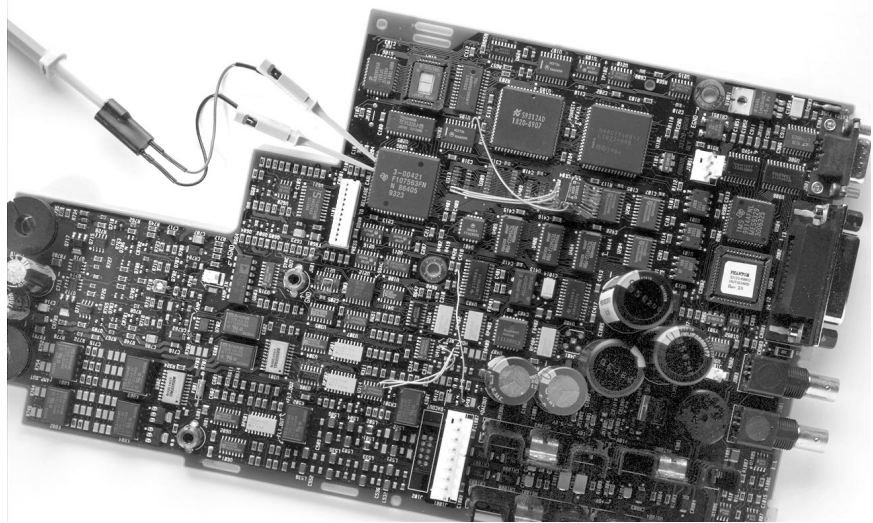
Agilent Technologies

Innovating the HP Way

Surface-mount packages on PC boards have become the norm rather than the exception. In the future, nearly 100 percent of both sides of a typical PC board will use SMDs. As a result, bulky probes may become useless as package sizes get smaller and smaller.

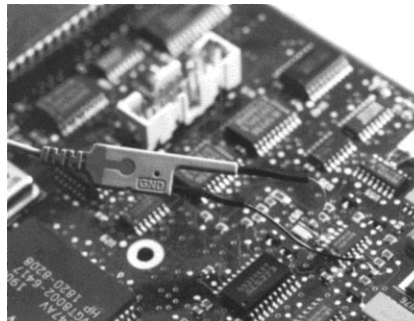
The 2-channel Agilent 1145A provides easy and reliable connection to SMDs on PC boards and backplanes, while delivering active probe performance down to the tip. Its unique design also presents a powerful combination of industry-standard compatibility and superior reliability. The probe's basic contact is a standard 25-mil square pin socket that houses only passive circuitry. The active circuitry is contained in a plastic pod 13 inches from the tip. This design ensures a small, lightweight, and rugged tip.

The electrical performance of the 1145A is unmatched by any off-the-shelf probe designed for SMD probing. The probe combines high bandwidth, high input resistance, and low input capacitance. This combination is superior to that of passive divider probes that have higher input capacitance because it provides minimal circuit loading at high and low frequencies (see the Impedance vs. Frequency graph). As signal speeds increase, passive divider probes don't deliver the performance needed. This lower performance can result in waveshapes that do not represent the actual signal. The 1145A used with an 54542A scope, for example, introduces the equivalent of only $\frac{1}{2}$ of a typical CMOS gate load (approximately 3.0 pF per gate) to a CMOS circuit. Other SMD probes used with comparable scopes can introduce $1\frac{1}{2}$ or more gate loads to the circuit under test.



SMT grabbers provide solid connection to leads with down to 50-mil spacings.

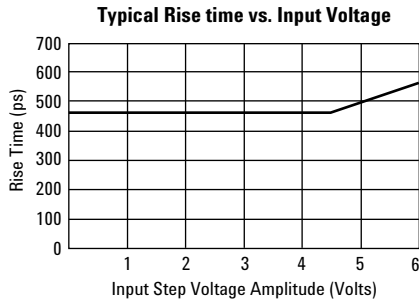
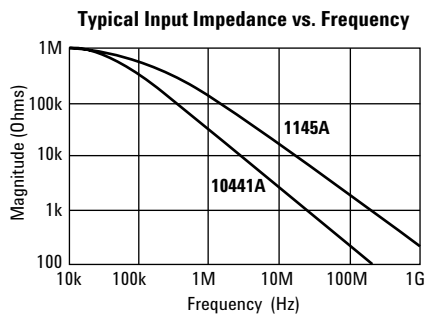
A versatile set of accessories lets you probe most any SMD package. The standard socket also makes the 1145A compatible with probing adapters from other vendors for fault-free probing of SMDs including 5-mil JEDEC, 0.5-mm EIAJ, 0.65-mm EIAJ packages.



Flexible SMT leads can be soldered to any convenient signal access point.

Specifications

Bandwidth ¹	≥ 750 MHz
RiseTime ^{1,2}	≤ 470 ps
Attenuation ³	10:1 ± 3%
Input Resistance	1 MΩ ± 2%
Maximum Input Voltage	± 40 V (dc + peak ac)



Characteristics

Input Capacitance	1.6 pF (typical)
Overshoot and Ringing ⁴	± 10 % for the first 6 ns, ± 4% from 6 ns to 20 ms, ± 1.5% thereafter
Output Voltage Offset	< ± 10 mV
Input Dynamic Range	±6.0 V
Output Load Requirement	50 Ω

General Characteristics

Environmental Conditions

Temperature	
Operating	0 °C to +55 °C (32 °F to +131 °F)
Nonoperating	-40 °C to +70 °C (-40 °F to +158 °F)
Humidity	
Operating	up to 95% relative humidity (non-condensing) at +40 °C (+104 °F)
Nonoperating	up to 90% relative humidity at +65 °C (+149 °F)
Altitude	
Operating	up to 4,600 meters (15,000 ft)
Nonoperating	up to 15,300 meters (50,000 ft)

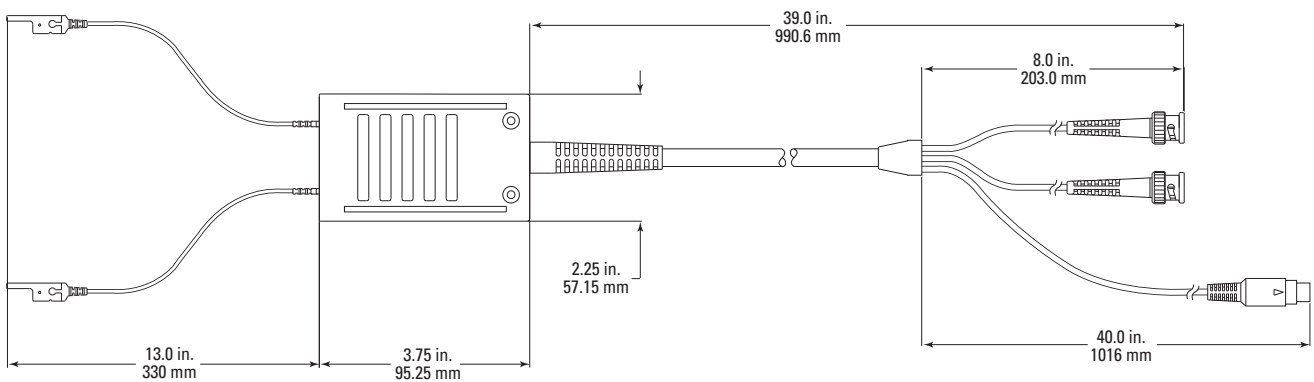
Vibration	Random vibration 5 to 500 Hz, 10 minutes per axis, 0.3 grms. Random vibration 5 to 500 Hz, 10 min. per axis, 2.41 grms. Resonant search 5 to 500 Hz swept sine, 1 octave/min. sweep rate, (0.75g), 5 min. resonant dwell at 4 resonances per axis.
-----------	----------------------------------------------------------------------------------------------------------------------------------------------------------------------------------------------------------------------------------------------------

Power Requirements	±6 V dc ± 2% (at approximately 180 mA each supply)
--------------------	-------------------------------------------------------

Weight	
Net	approximately 8 oz
Shipping	approximately 1 kg (2.2 lb)

Dimensions	Refer to the 1145A drawing
------------	----------------------------

- Above 35 °C, bandwidth and rise time degrade approximately 1/2%/°C.
- Rise time figure calculated from $t_r = 0.35/\text{Bandwidth}$.
- When connected to an instrument input of 50 Ω, ±0.5%.
- Oscilloscope characteristics excluded.



1145A Dimensions

Ordering Information

1145A Active Probe
Accessory kit that contains 4 probing pins, 5 SMT grabbers, 2 ground extenders, 2 ground leads with pin-sockets, and 2 red and 2 black solderable SMT leads. User and Service Guide, One-year warranty

Available Accessories

16517-8210 Kit with 4 probing pins
5090-4356 SMT grabber kit with 20 grabbers
16517-82105 Ground extender kit with 20 extenders
16517-82106 Ground lead with pin-socket kit with 20 leads
16517-82104 SMT lead kit with 4 red and 4 black leads

Also Available

1142A Probe control and power supply module
Includes: power cord, one-year warranty
Note: Offset and coupling control is not usable with 1145A
01145-68701 Cal kit
Includes: 50 Ω feedthrough termination, SMA adapter

Agilent Technologies' Test and Measurement Support, Services, and Assistance

Agilent Technologies aims to maximize the value you receive, while minimizing your risk and problems. We strive to ensure that you get the test and measurement capabilities you paid for and obtain the support you need. Our extensive support resources and services can help you choose the right Agilent products for your applications and apply them successfully. Every instrument and system we sell has a global warranty. Support is available for at least five years beyond the production life of the product. Two concepts underlie Agilent's overall support policy: "Our Promise" and "Your Advantage."

Our Promise

"Our Promise" means your Agilent test and measurement equipment will meet its advertised performance and functionality. When you are choosing new equipment, we will help you with product information, including realistic performance specifications and practical recommendations from experienced test engineers. When you use Agilent equipment, we can verify that it works properly, help with product operation, and provide basic measurement assistance for the use of specified capabilities, at no extra cost upon request. Many self-help tools are available.

Your Advantage

"Your Advantage" means that Agilent offers a wide range of additional expert test and measurement services, which you can purchase according to your unique technical and business needs. Solve problems efficiently and gain a competitive edge by contracting with us for calibration, extra-cost upgrades, out-of-warranty repairs, and on-site education and training, as well as design, system integration, project management, and other professional services. Experienced Agilent engineers and technicians worldwide can help you maximize your productivity, optimize the return on investment of your Agilent instruments and systems, and obtain dependable measurement accuracy for the life of those products.



Agilent Technologies

Innovating the HP Way