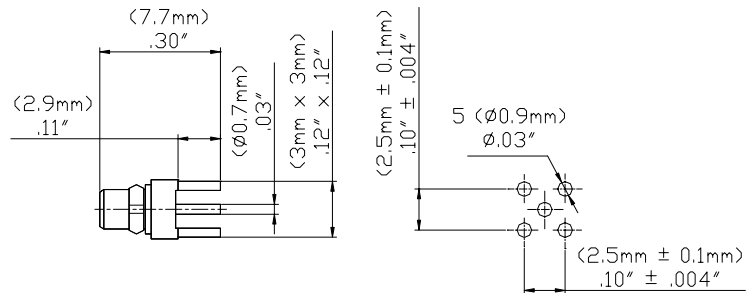


**Model 73038
MMCX PLUG STRAIGHT EDGECARD**



Model 73038 MMCX PLUG STRAIGHT EDGECARD



Snap-on coupling and micro-miniature size for fast connect and disconnect where space is limited

Features

- DC - 6 GHz bandwidth.
- 50% smaller than MCX connectors.
- Connectors allow rotation of 360° for layout flexibility.
- Non-slotted contact design for low RF leakage.
- Meets CECC 22340.
- Perfect for applications where space, weight, performance and ease of assembly are required.

Materials

- Body is machined brass with gold plating.
- Center contacts – Plug is gold plated Phosphor bronze and Jack is gold plated beryllium copper.
- High quality PTFE insulators.
- Crimp Ferrules are gold or nickel plated copper

Specifications

Impedance	50 Ω
Frequency Range	DC - 6 GHz max
Working Voltage	170 Vrms max.
Dielectric Withstanding Voltage	500 Vrms
VSWR	1.25 max.
Center / Outer contact resistance	10 / 5 mΩ
Number of insertions	500 cycles minimum
Insulation resistance	> 500 MΩ
Temperature Range	-65° C to 165° C, -85° F to 329° F

Ordering Information

Model: 73038
Description: MMCX PLUG STRAIGHT EDGECARD



99 Washington Street
Melrose, MA 02176
Phone 781-665-1400
Toll Free 1-800-517-8431

- ▶ Visit us at www.TestEquipmentDepot.com
- ▶ Back to the Pomona 73038 Product Page

All dimensions are in inches. Tolerances (except noted): .xx = ± .02" (.51 mm), .xxx = ± .005" (.127 mm). All specifications are to the latest revisions. Specifications are subject to change without notice. Registered trademarks are the property of their respective companies.
D2003384 REV 001