

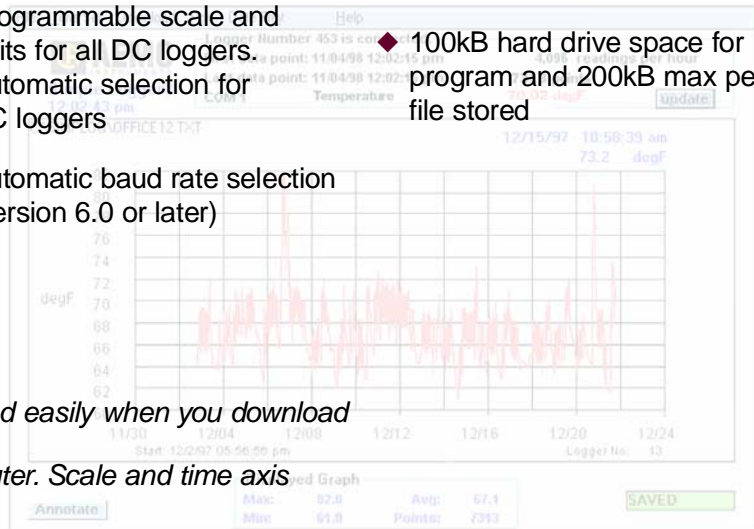
Simple Logger® Software

Features

- ◆ Very easy to set up and use — no programming required
- ◆ Statistics appear on screen: Max, Min, Avg, Date and Time
- ◆ On-Line display of data logger values
- ◆ Zoom capability with automatic statistics update
- ◆ User keyed text annotations
- ◆ Automatically displays values at the cursor position
- ◆ Export data to spreadsheet and database software
- ◆ Print both graphs and tabular listings
- ◆ Paste graphs into other applications
- ◆ Programmable scale and units for all DC loggers. Automatic selection for AC loggers
- ◆ Automatic baud rate selection (version 6.0 or later)

Computer Requirements

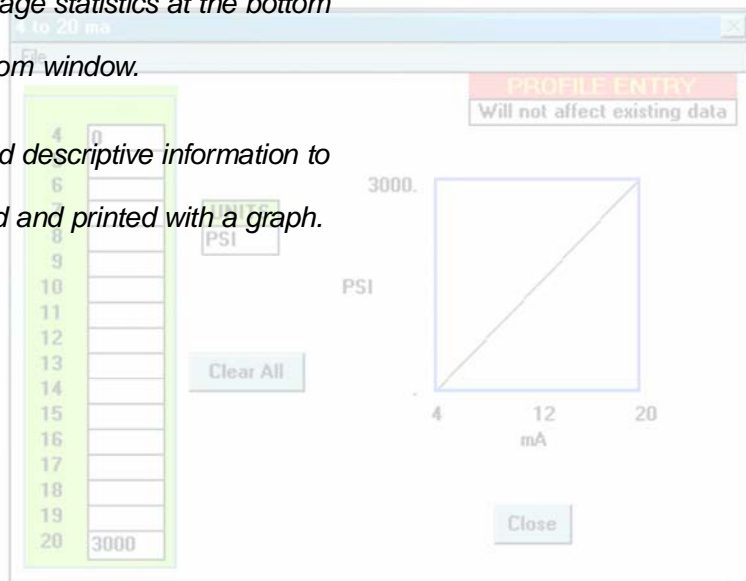
- ◆ 386 or higher
- ◆ 4 MB of RAM
- ◆ Windows® 3.1, Windows® 95 or Windows® 98
- ◆ 1 serial port not in use by any other device
- ◆ 100kB hard drive space for program and 200kB max per file stored



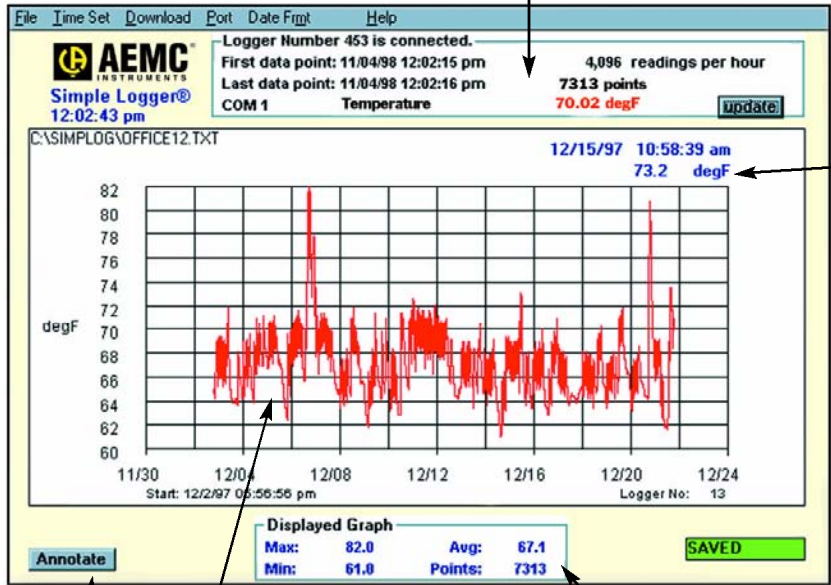
Plot graphs and view statistics quickly and easily when you download data from Simple Logger® to your computer. Scale and time axis update automatically.

Click and drag your mouse to zoom up the desired area of the graph for better viewing. The Min, Max and Average statistics at the bottom of the graph update automatically with zoom window.

Click the Annotate button to add a title and descriptive information to your graph. This information can be stored and printed with a graph.



On-line display of data



Automatic update of Y data at cursor position

Annotate button

Plot area with value and time data shown on the X and Y axis

Graph Statistics

Graph Description

Graph Title:

Graph Description:

Information which will be stored with the graph file

Tag:

Location:

4,096 readings per hour
7313 points
70.02 degF

degF

12/08 12/09 12/10 12/11 12/12

Start: 12/8/97 01:15:41 pm

Logger No: 13

Unzoom

Annotate

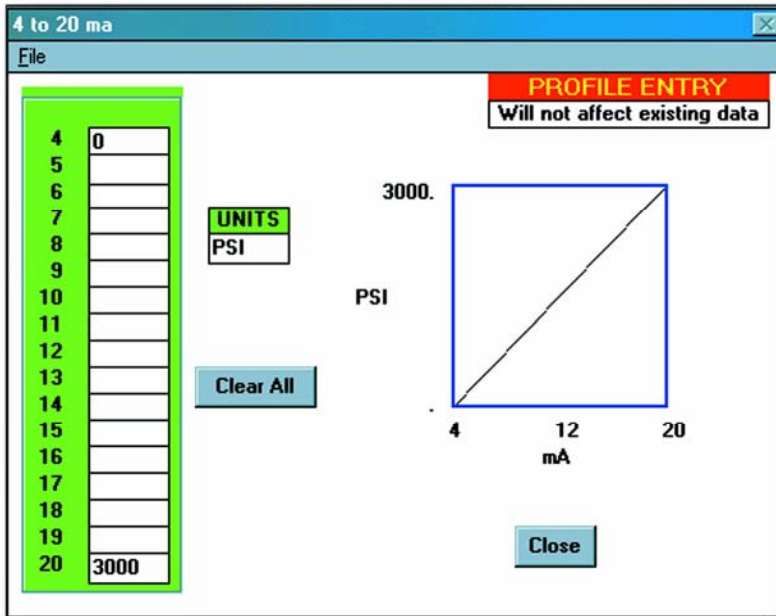
Displayed Graph

Max: 82.0 Avg: 67.3
Min: 61.0 Points: 7313

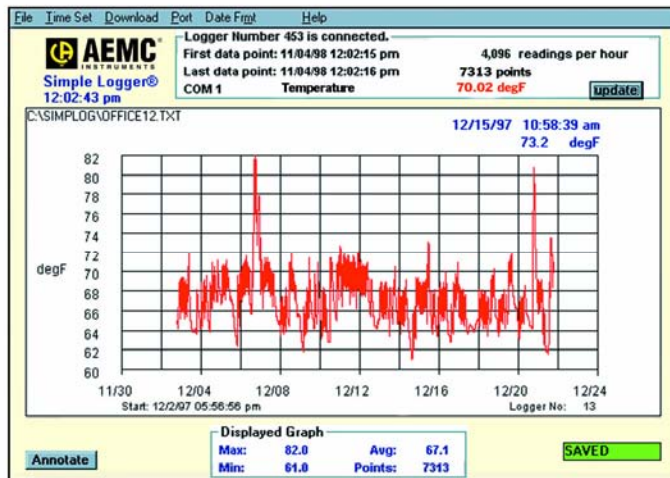
Click the Annotate button to add a title and descriptive information to your graph. This information can be stored and printed with a graph.



Simple Logger® Software



Click the scale button in the file menu to create custom scales and engineering units for DC voltage (Models L410 & L430) and DC current loggers (Model L320).



Click and drag your mouse to zoom up the desired area of the graph for better viewing. The Min, Max and Average statistics at the bottom of the graph update automatically when the graph is zoomed.

