

# Power Quality Meter Model 8220



Model 8220



## Features

- Measures up to 660Vrms or Vdc
- Measures up to 6500Aac or 1400Adc (probe dependent)
- Displays Min, Max and Average Volts and Amps, Crest Factor, Peak value and K-Factor
- Calculates and displays Watts, VARs and VA, Power Factor and Displacement Power Factor for single-phase and balanced three-phase
- Displays total harmonic distortion (THD-F and THD-R) for voltage and current
- Displays individual harmonic values and % for Volts and Amps through the 50<sup>th</sup> harmonic
- Captures and displays inrush current
- Calculates and displays phase rotation and RPM
- Displays temperature in both °F and °C
- Displays resistance up to 200Ω
- Conducts continuity and diode tests
- Stores up to nine complete sets of readings for all volt, amp, power and harmonic measurements
- Configurable from DataView® software or front panel
- Download stored data to DataView® software via optical USB port
- Operates off batteries or recharger
- Includes DataView® software FREE for data storage, real-time waveform display, analysis and report generation

## SPECIFICATIONS

| MODEL                     | 8220   |
|---------------------------|--|
| <b>ELECTRICAL</b>         |  |
| <b>Voltage (TRMS)</b>     | Phase-to-Phase: 660V<br>Phase-to-Neutral: 600V   |
| <b>Current (TRMS)</b>     | MN Clamp: 5mA to 100mA/120A or 2 to 240A<br>MR Clamp: 10 to 1000Aac, 10 to 1400Adc<br>SR Clamp: 3 to 1200A<br>AmpFlex®: 10 to 6500A <sup>(1)</sup> |
| <b>Frequency (Hz)</b>     | 40 to 70Hz   |
| <b>Other Measurements</b> | kW, kVAR, PF, DPF, VA, Phase Rotation Temperature, RPM, Resistance, Continuity, Diode Test   |
| <b>Harmonics</b>          | 1 <sup>st</sup> to 50 <sup>th</sup>  |
| <b>Sampling Frequency</b> | 256 samples/cycle  |
| <b>Data Storage</b>       | Stores nine sets of readings for volts, amps, power and harmonics  |
| <b>Power Source</b>       | Six 1.5V AA Alkaline batteries<br>AC Supply: 120/230Vac (50/60Hz) – optional   |
| <b>Battery Life</b>       | ≥Eight hrs with display on   |
| <b>MECHANICAL</b>         |  |
| <b>Communication Port</b> | Optically isolated USB   |
| <b>Display</b>            | Three-line backlit digital display with custom icons   |
| <b>Dimensions</b>         | 8.3 x 4.3 x 2.4" (211 x 108 x 60mm)  |
| <b>Weight</b>             | 1.9 lbs (8.8kg)  |
| <b>Safety Rating</b>      | EN 61010, 600V Cat. III, IP 54, Pollution Degree 2   |

<sup>(1)</sup>Crest factor at 6500 = 1



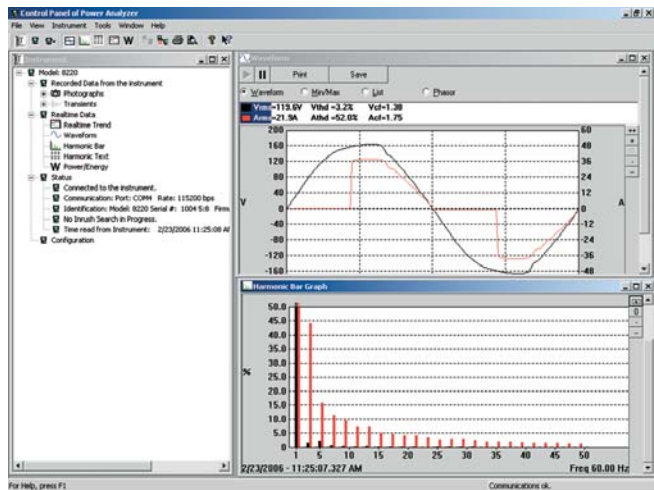
All models include current probe with 10 ft lead and black connector (MN93 example shown), black and red 10 ft voltage leads and alligator clips, optical USB cable, six 1.5V batteries, two safety test probes, DataView® software, carrying bag, soft carrying pouch and user manual.

See page 15 for optional accessories available for Model 8220.

# DataView Software for Model 8220



DataView® is included with the Power Quality Meter Model 8220. See page 15 for all of the features for DataView®.



Real-time waveform and harmonics display using DataView® software.

## Choose from a variety of current probe options



SR193 (1200A) current probe



AmpFlex® 193 (6500A) flexible current probe (available in 24" or 36" lengths)



MN93 (240A) current probe or MN193 (6A/120A) current probe



| CATALOG NO. | DESCRIPTION   |
|-------------|---|
| 2130.91     | Power Quality Meter Model 8220 w/MN93-BK (240A)                                       |
| 2130.92     | Power Quality Meter Model 8220 w/SR193-BK (1200A)                                     |
| 2130.93     | Power Quality Meter Model 8220 w/24" AmpFlex® 193-24-BK (6500A)                       |
| 2130.94     | Power Quality Meter Model 8220 w/36" AmpFlex® 193-36-BK (6500A)                       |
| 2130.95     | Power Quality Meter Model 8220 w/MR193-BK (1000A <sub>AC</sub> /1400A <sub>DC</sub> ) |
| 2130.96     | Power Quality Meter Model 8220 w/MN193-BK (6A/120A <sub>AC</sub> )                    |